

### Ordering Code

Hand Valve

**TG**

TG

**25**

(Valve Type):  
25:  
(2 Position/5 Ports)

**2**

(Connection Code): (Control Form):  
(Hand Lever)

**1B**

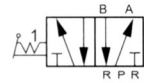
**06**

(Pipe Size):  
08: G1/4  
10: G3/8

**M**

Way of installation  
(Blank):  
(Normal Type)  
M :  
(Multiple location installation)

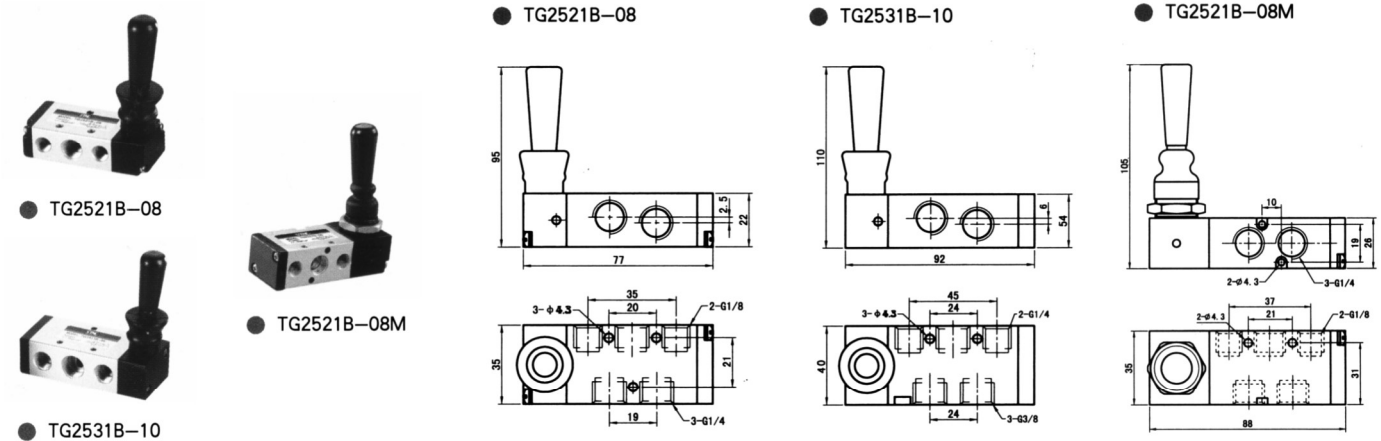
■  
(Graphics Sign)



### Technical Parameter

(Item) (Specification)	(Valve Type)	(Pipe Thread)	(mm) (Nominal Diameter)	(Applicable Fluid)	(Pressure Range)	(Operating Method)	(Lubrication)	(Applicable Temperature)
TG2521B-08	(2 Position/ 5 Ports)	G1/4	8	(Compressed Air)	0~1.0MPa	(Direct Action Type)	(Not Required)	-5~60°C
TG2531B-10		G3/8	10					
TG2521B-08M		G1/4	8					

### Figure Dimension



### Ordering Code

Hand Valve

**TG**

TG

**25**

(Valve Type):  
23:  
(2 Position/3 Ports)  
25:  
(2 Position/5 Ports)

**2**

(Connection Code): (Control Form):  
(Hand Lever)

**1H**

**06**

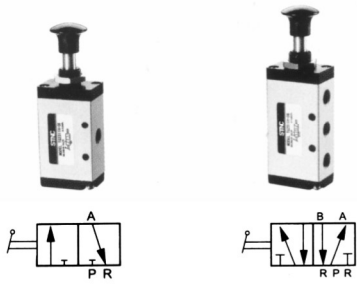
(Pipe Size):  
06: G1/8  
08: G1/4  
10: G3/8  
15: G1/2

### Technical Parameter

Item Specification	Valve Type	Pipe Thread	mm (Nominal Diameter)	Applicable Fluid	Pressure Range	Operating Method	Lubrication	(Applicable Temperature)
TG2311H-06	2 Position/ 3 Ports	G1/8	6	Compressed Air	0~1.0MPa	Direct Action Type	Not Required	-5~60°C
TG2321H-08		G1/4	8					
TG2331H-10		G3/8	10					
TG2341H-15		G1/2	15					
TG2511H-06	2 Position/ 5 Ports	G1/8	6					
TG2521H-08		G1/4	8					
TG2531H-08		G3/8	10					
TG2541H-15		G1/2	15					

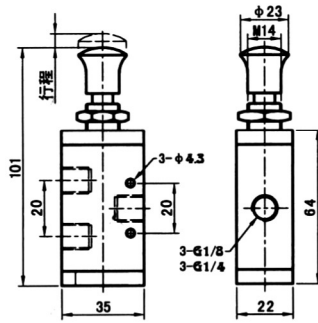
## Figure Dimension

● TG2311H-06(TG2321H-08)

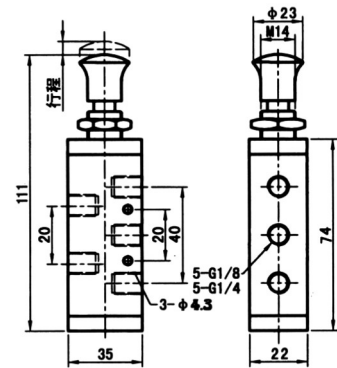


● TG2311H-06

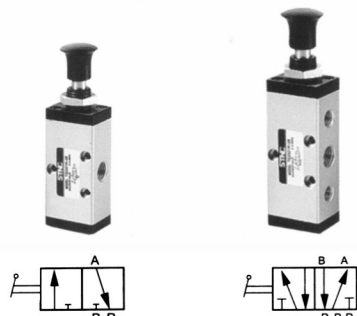
● TG2511H-06



● TG2511H-06(TG2521H-08)

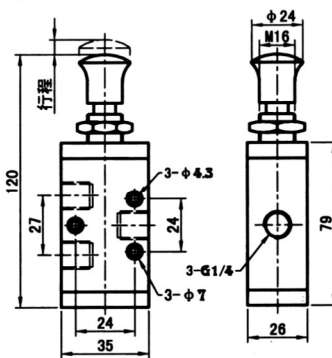


● TG2321H-08

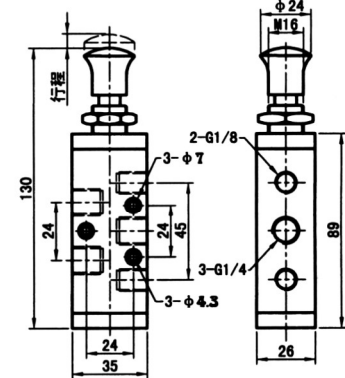


● TG2321H-08

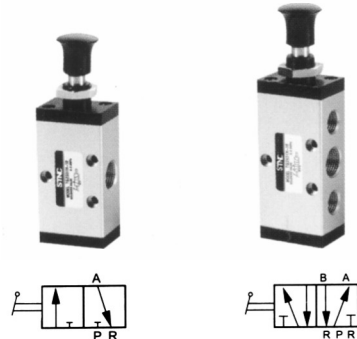
● TG2521H-08



● TG2521H-08

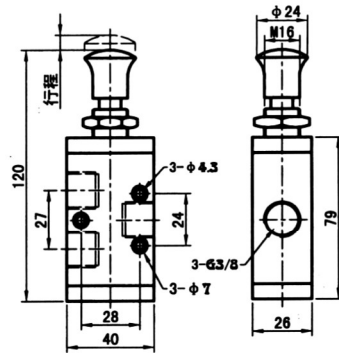


● TG2331H-10

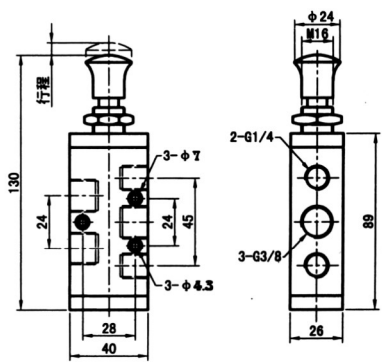


● TG2331H-10

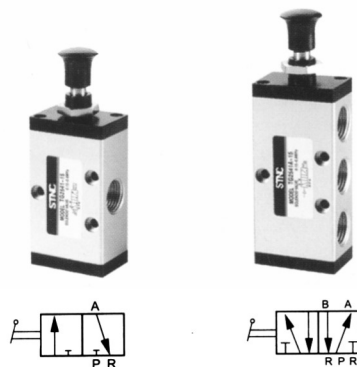
● TG2531H-10



● TG2531H-10

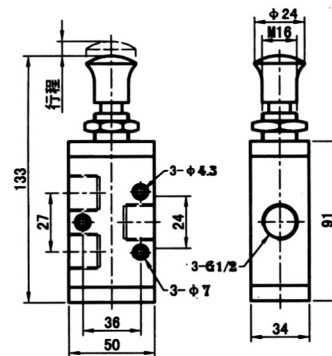


● TG2341H-15



● TG2341H-15

● TG2541H-15



● TG2541H-15

